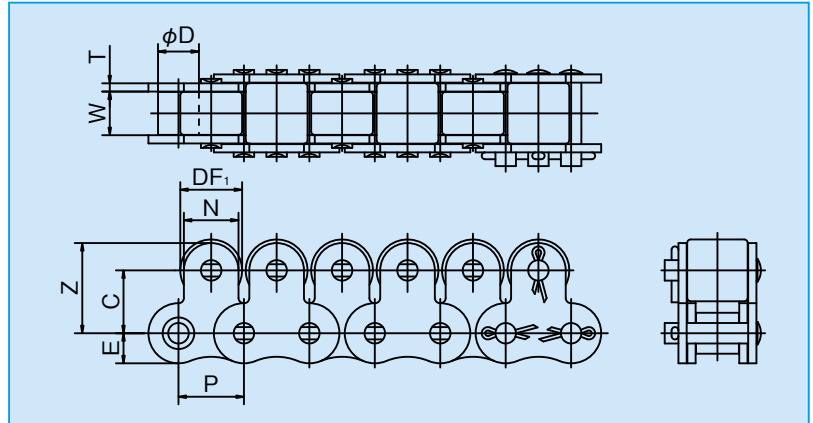
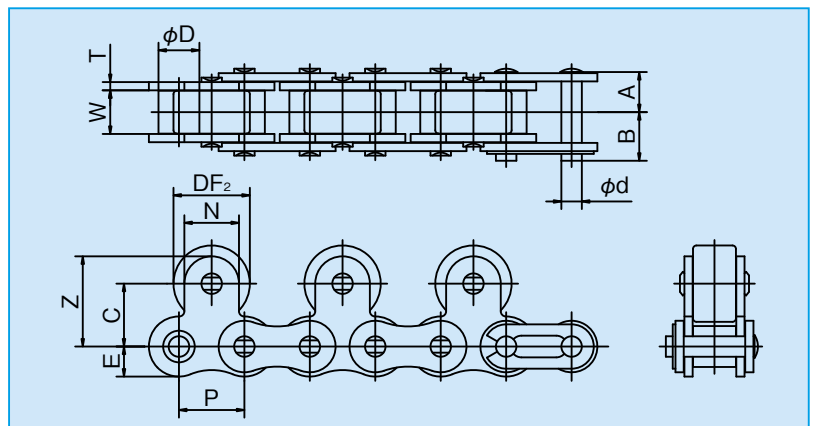


The roller chains are provided with raised carrying rollers at midpoint of chain pitch for quick carrying and accumulating of materials. Top rollers, made of steel, plastic, and rubber, are available.

## Top Roller Arrangement in Single Pitch



## Top Roller Arrangement in Double Pitch



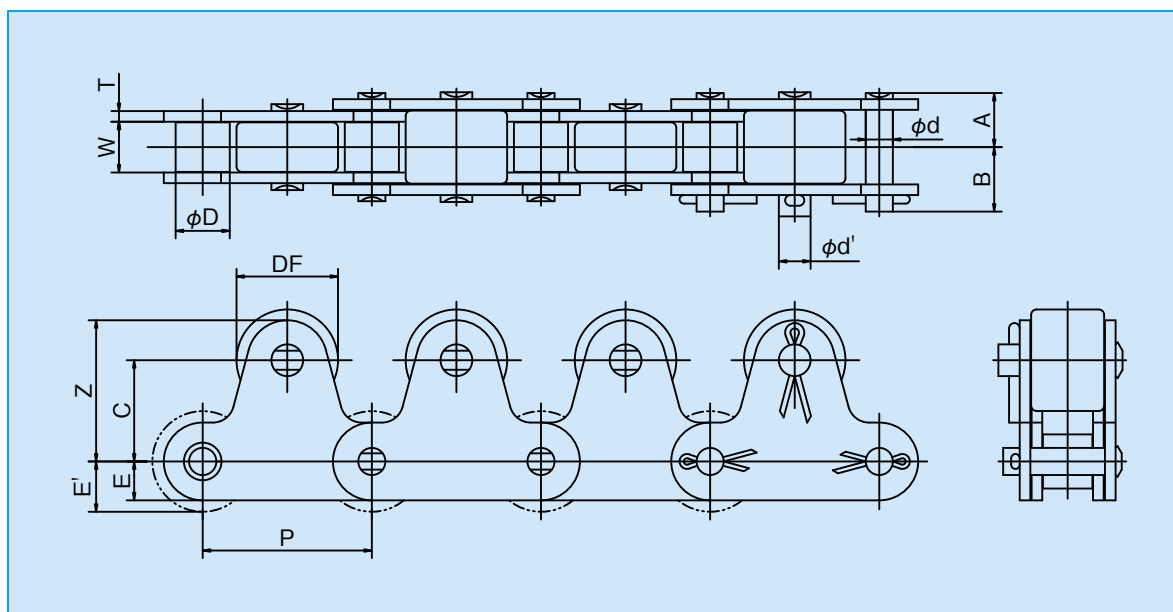
○ Dimensions

[Unit: mm]

KCM Chain No.	Pitch P	Width between Inner Plates W	Roller Dia. D	Pin			Attachments						Approx. Weight (kg/m)			
				Dia. d	A	B	Top rollers		C	Z	N	E	Steel		Plastic	
							DF <sub>1</sub>	DF <sub>2</sub>					1P	2P	1P	2P
<b>KCM 40</b>	12.70	7.95	7.92	3.97	8.07	9.48	11.0	15.88	12.7	17.45	9.5	5.9	1.83	1.41	0.92	0.85
<b>KCM 50</b>	15.875	9.53	10.16	5.09	10.17	11.63	15.0	19.05	15.9	22.25	12.7	7.3	2.39	2.18	1.56	1.38
<b>KCM 60</b>	19.05	12.70	11.91	5.96	12.70	14.20	18.0	22.23	18.3	26.25	15.9	8.8	3.60	3.18	2.30	2.03
<b>KCM 80</b>	25.40	15.88	15.88	7.94	16.15	19.25	24.0	28.58	24.6	34.15	19.1	11.5	6.09	5.27	3.90	3.44
<b>KCM 100</b>	31.75	19.05	19.05	9.54	20.10	23.05	30.0	39.69	31.8	44.50	25.4	14.5	9.30	8.85	6.06	5.41

NOTES: - For allowable load of top roller, see page 54.

- Connecting links for the KCM80 or larger models use split pins.



○ Dimensions

[Unit: mm]

KCM Chain No.	Pitch P	Width between Inner Plates W	Roller Dia. D	Pin			Attachments				Additional Weight per Attachment (kg)
				Dia. d (d')	A (A')	B (B')	DF	C	Z	E (E')	
<b>KCM C2040</b>	25.40	7.95	7.92	3.97	8.02	9.53	15.88	15.0	21.0	5.9	0.021
<b>KCM C2042</b>			15.88	( 5.09 )	( 8.3 )	(10.2 )				( 7.9 )	
<b>KCM C2050</b>	31.75	9.53	10.16	5.09	10.15	11.60	19.05	19.0	26.5	7.3	0.038
<b>KCM C2052</b>			19.05	( 5.96 )	(10.35)	(13.05)				( 9.5 )	
<b>KCM C2060H</b>	38.10	12.70	11.91	5.96	14.25	15.75	22.23	23.0	32.0	8.8	0.080
<b>KCM C2062H</b>			22.23	( 7.94 )	(14.4 )	(17.55)				(11.1)	
<b>KCM C2080H</b>	50.80	15.88	15.88	7.94	17.7	20.8	28.58	29.0	40.5	11.5	0.165
<b>KCM C2082H</b>			28.58	(11.11)	(17.9 )	(22.2 )				(14.3)	
<b>KCM C2100H</b>	63.50	19.05	19.05	9.54	21.72	24.68	39.69	35.4	49.7	14.5	0.340
<b>KCM C2102H</b>			39.67	(14.28)	(22.02)	(27.43)				(19.8)	

NOTES: - When used with the R-type roller chains, pay attention to the sprockets.

- For allowable load of top roller, see page 54.

- Connecting links for the C2080 or larger models use split pins.